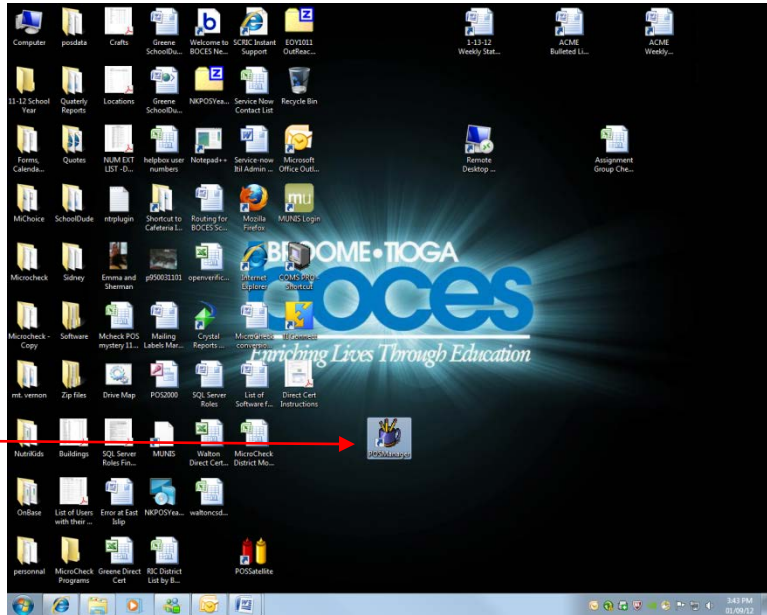


# eMeal Service Program – Complete Procedures

**Daily Startup:** Push power button on System Unit

Double-click the POS Manager shortcut



Enter Login Name and Password



You will now see the eMeals main screen

Report Selection Button

Meal Service Buttons:

- Breakfast
- Lunch

Click on a meal service button

ACCOUNT MANAGER SYSTEM SETUP VIEW POS ACTIVITY **REPORT SELECTIONS** DATA TRANSFERS POST COSTS END DAY

**DEMO**  
**Out Of Service**

2 NOT ACTIVE  
3 NOT ACTIVE

Global Account Access Enabled: No Errors Detected

My IP 10.200.250.179 First 5000 01/09/2012 3:56:06 PM

ACCOUNT MANAGER SYSTEM SETUP VIEW POS ACTIVITY REPORT SELECTIONS DATA TRANSFERS POST COSTS END DAY

**DEMO**  
**Entered Breakfast**

2 NOT ACTIVE  
3 NOT ACTIVE

Global Account Access Enabled: No Errors Detected

My IP 10.200.250.179 First 5000 01/09/2012 4:01:45 PM

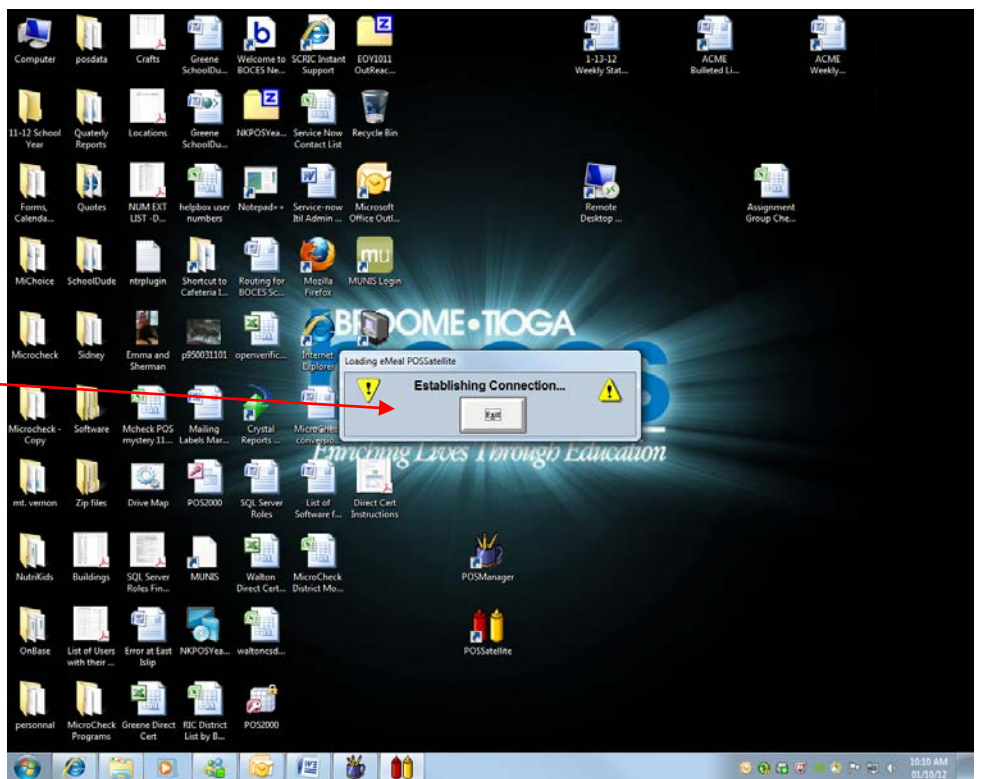
The appropriate meal service will now be ready on the POS Manager.

AT the POS

Double-Click on the  
POSSatellite

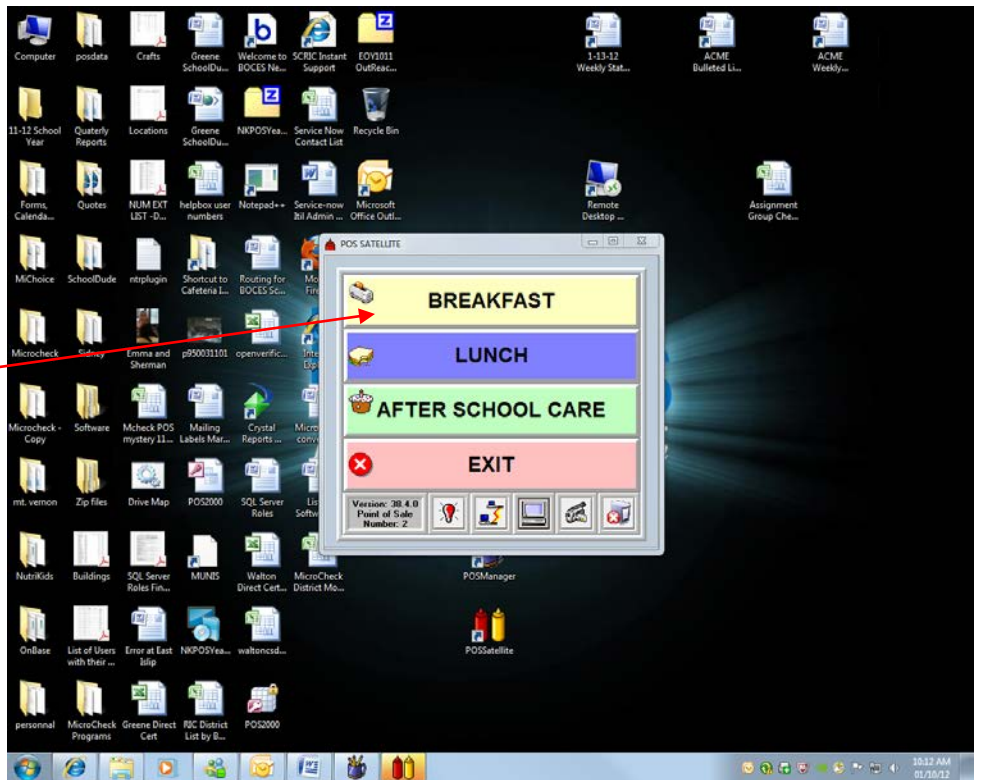


You will then see the box  
“Establishing Connection”

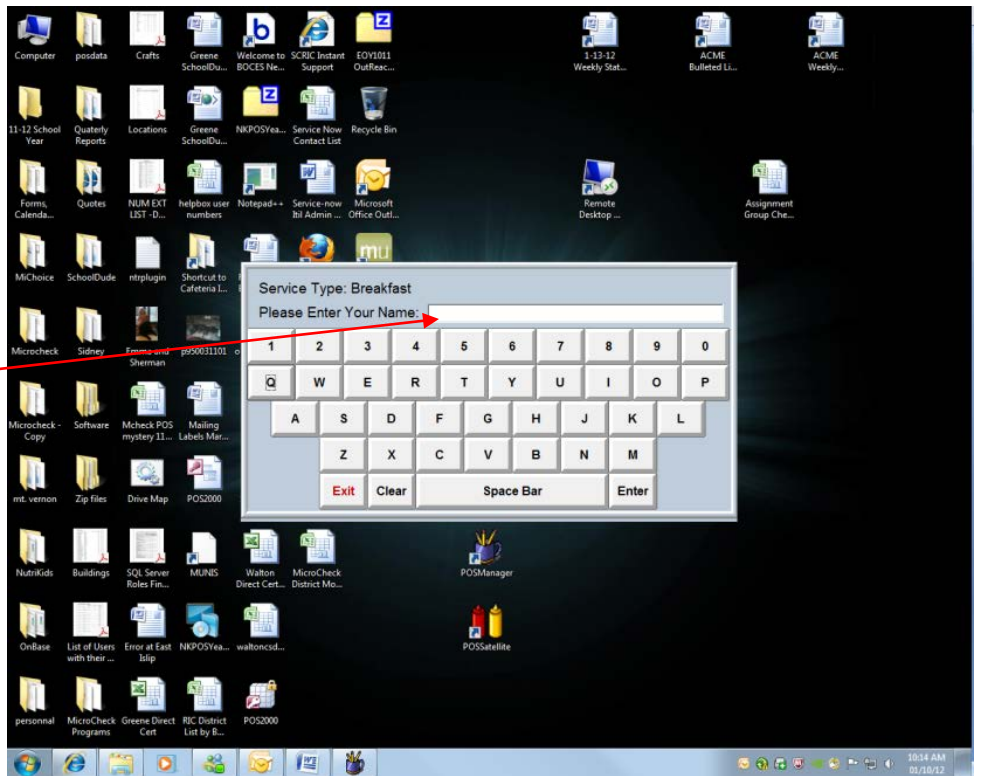




Once Connection has been made you can make your choice of Meal Service to go into



The cashier would then enter their initials or their name whichever is normally used and then hit enter.



Once the enter button is selected then the service information will be loaded and once it is complete the Menu will appear.

